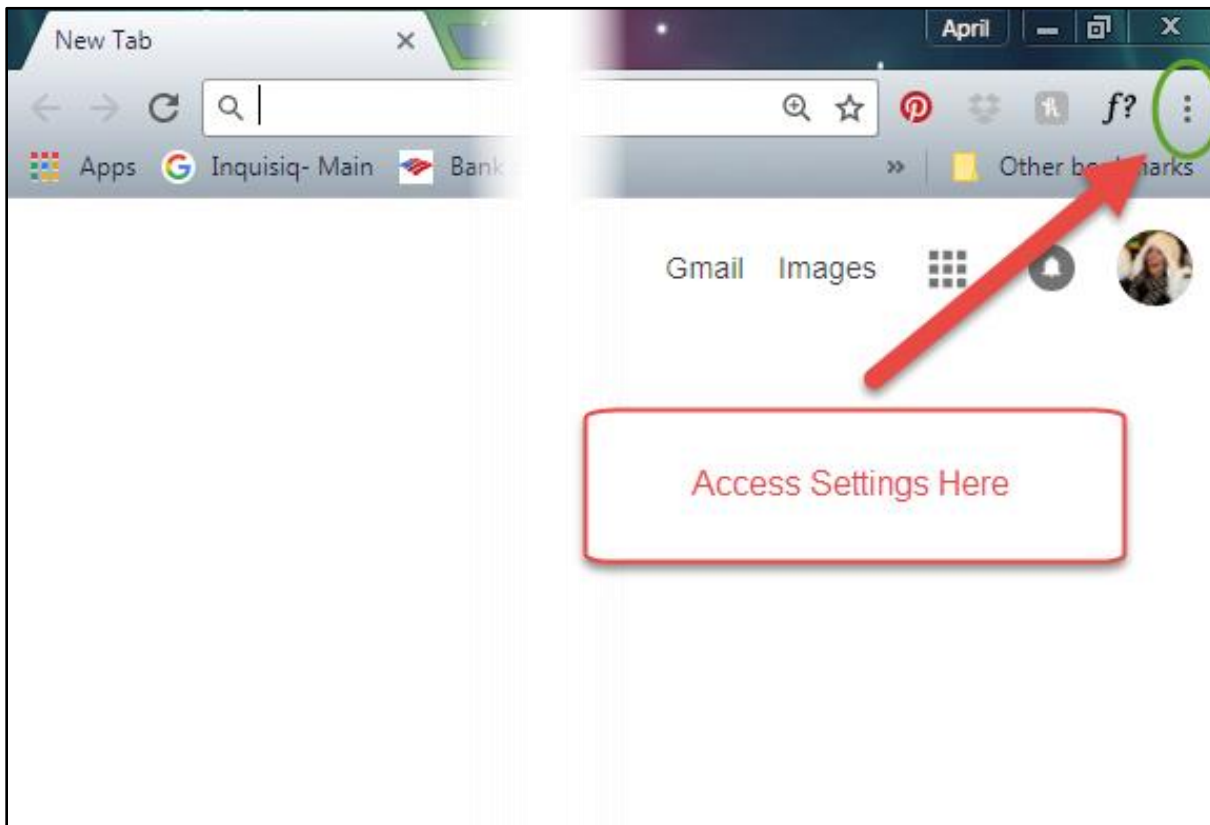


Edit Flash Settings in Google Chrome

In December 2016 Google began blocking Adobe Flash Content on Chrome by default. Flash is required for most online learning to properly run.

Chrome allows for certain websites to be set to enable Flash. Follow the below instructions to add the AE21 Online Learning Management System to your list of Flash-enabled sites.

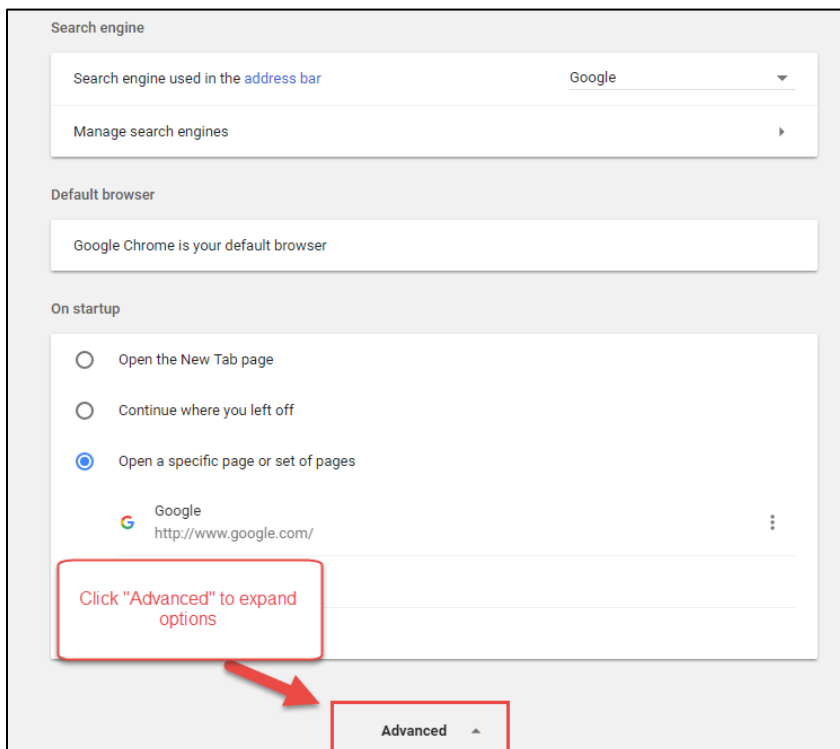
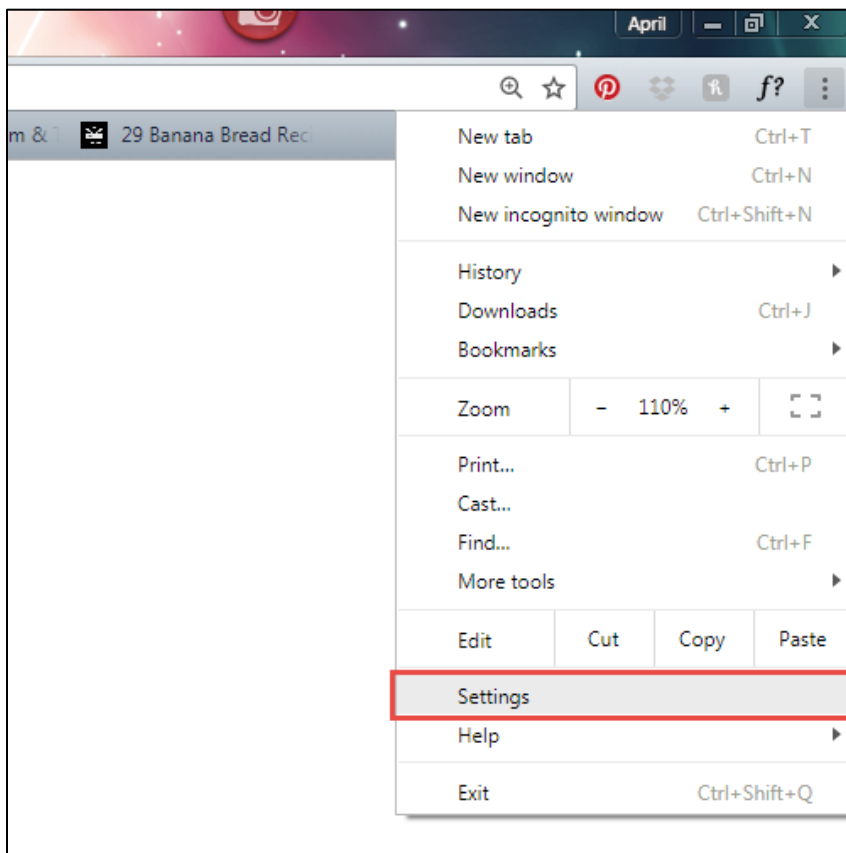


Note that the following screen shots may look slightly different depending on the version of Chrome that you are currently running.

To check Chrome version and update if necessary, go to Help > About Google Chrome. It should automatically update if not up to date.

To access the Flash settings, go to Settings > Advanced > Content Settings > Flash.

See screenshots below.



Privacy and security

Google Chrome may use web services to improve your browsing experience. You may optionally disable these services. [Learn more](#)

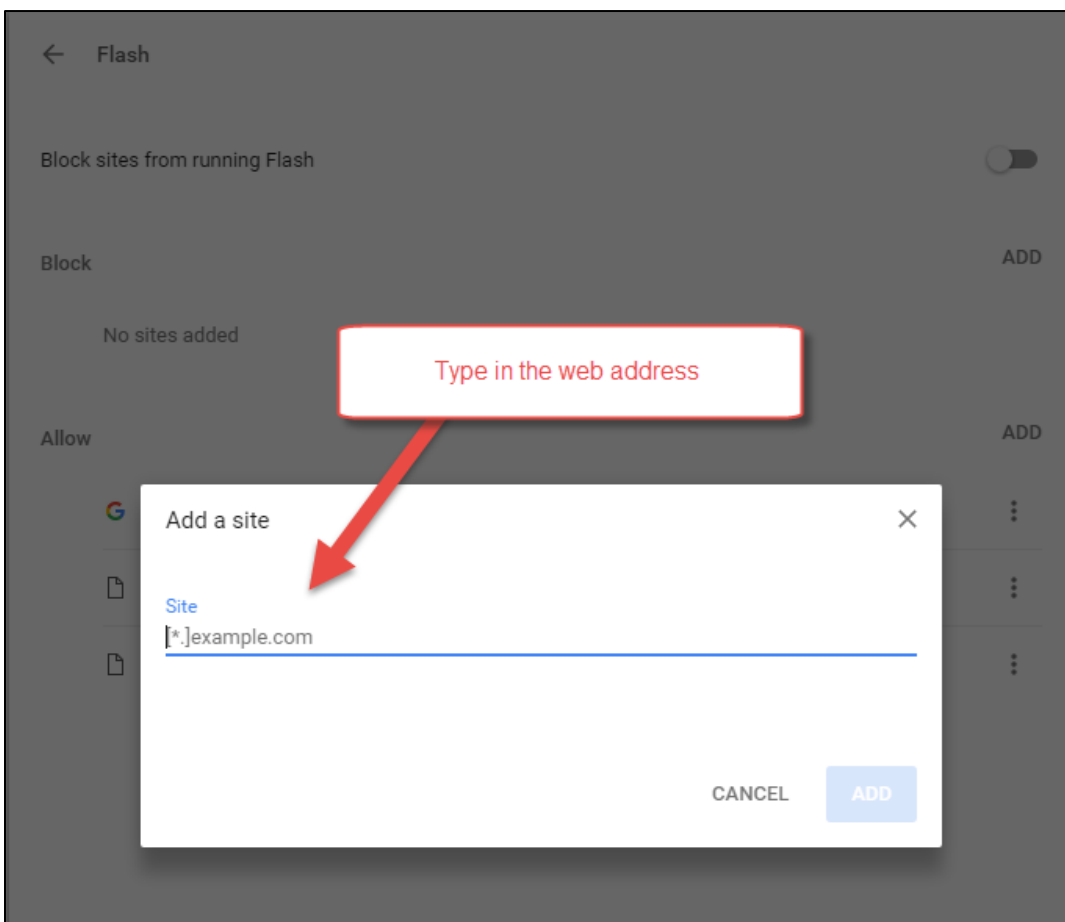
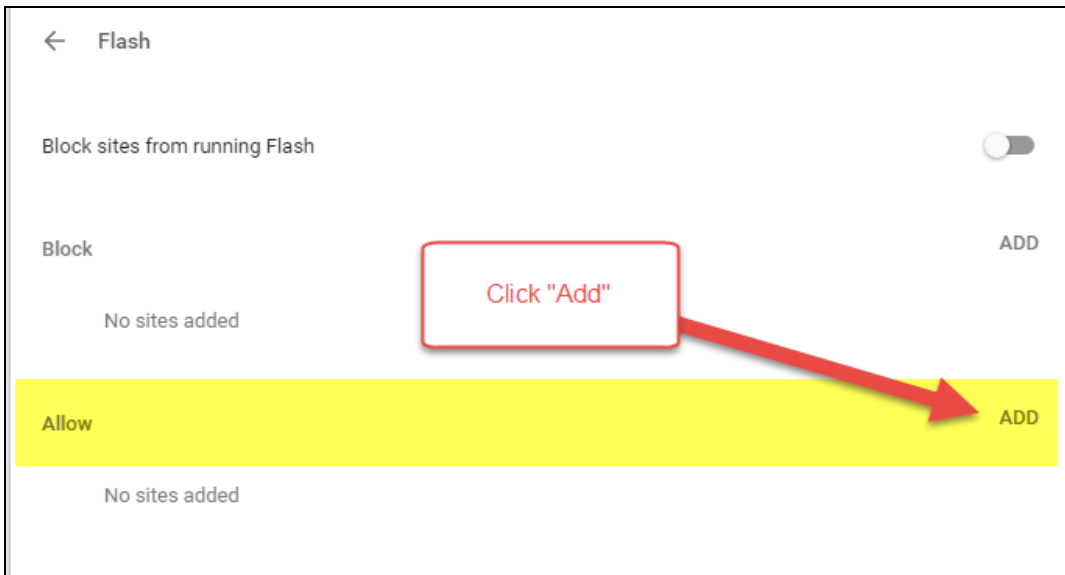
- Use a web service to help resolve navigation errors
- Use a prediction service to help complete searches and URLs typed in the address bar
- Use a prediction service to load pages more quickly
- Automatically send some system information and page content to Google to help detect dangerous apps and sites
- Protect you and your data
- Automatically send a "Do Not Track" header
- Use a web service to help resolve spelling errors
Smarter spell-checking by sending what you type in the browser to Google
- Manage certificates
Manage HTTPS/SSL certificates and settings
- Content settings**
Control what information websites can use and what content they can show you
- Clear browsing data
Clear history, cookies, cache, and more

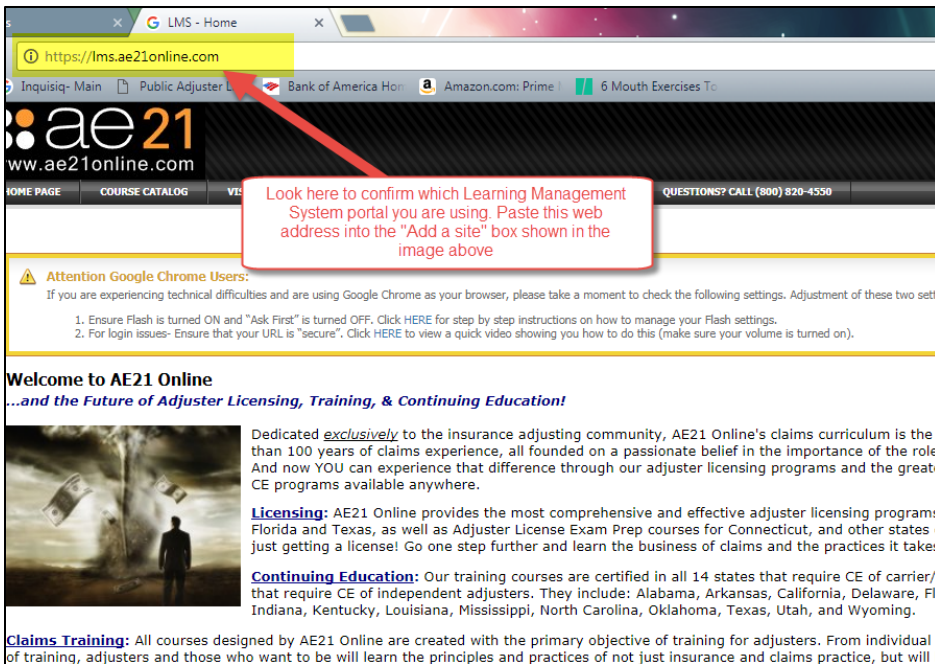
Open Content Settings

← Content settings ?

- Cookies
Allow sites to save and read cookie data
- Location
Ask before accessing
- Camera
Ask before accessing
- Microphone
Ask before accessing
- Notifications
Ask before sending
- JavaScript
Allowed
- Flash
Block sites from running Flash**
- Images
Show all
- Popups
Allowed

Open Flash Settings

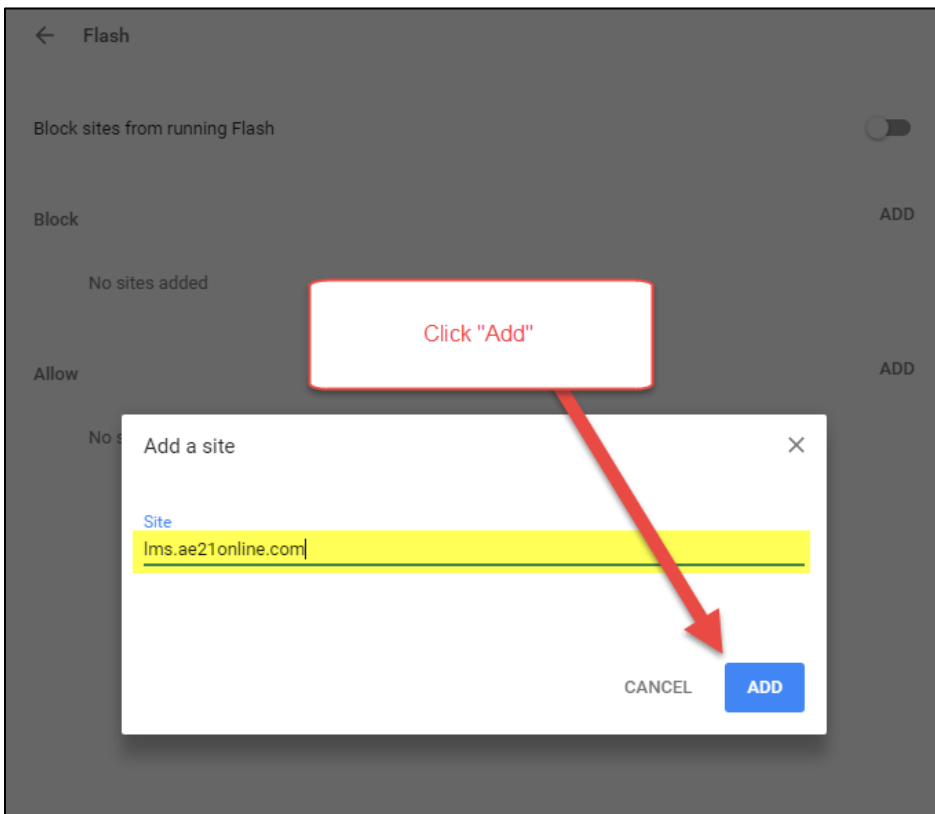




Type or copy/paste the web address of the Learning Management System portal that you are using. The image above shows you where to find this information.

The web address will be one of the following:

- lms.ae21online.com
- publicadjusters.ae21online.com
- wardlaw.ae21online.com



Re-start your browser.